

Manawa Energy

Infratil Investor Day Update

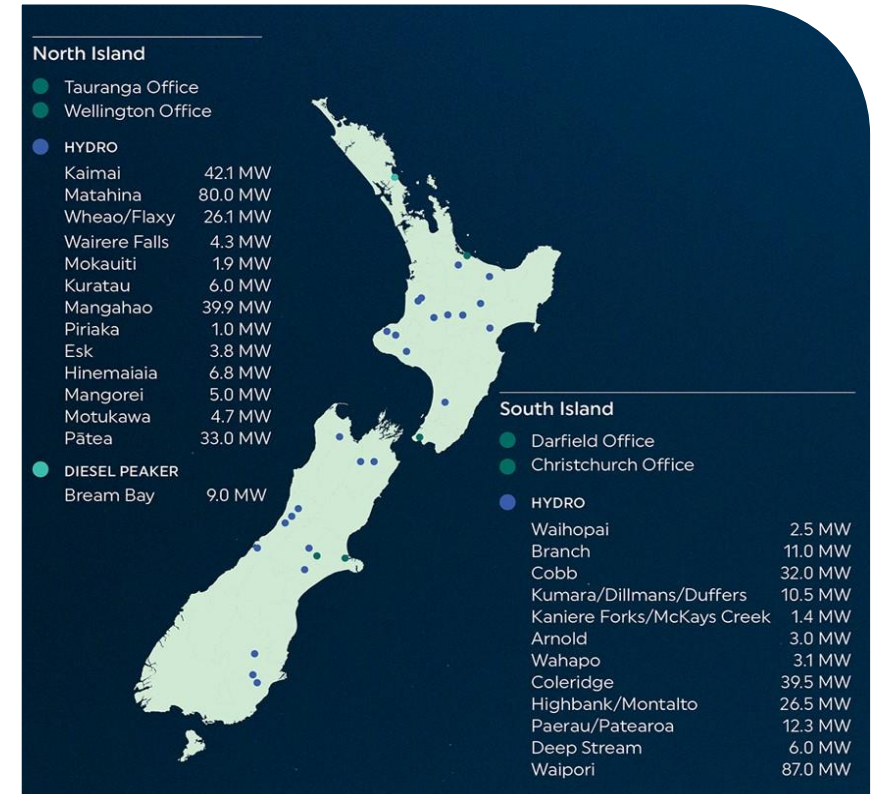
24 March 2023



Manawa Energy

- New Zealand's largest independent* electricity generator and renewables developer
- 26 power schemes throughout New Zealand
- Capacity of 502MW (average 1,942 GWh pa) – 99%+ renewable
- ~650 customers at more than ~6,400 electricity connections nationally
- Headquartered in Tauranga, approximately 230 FTE employees, including a dedicated new generation development team
- Current market capitalization is ~\$1.5 billion
- 51% owned by Infratil

* By independent we mean without an integrated mass-market retail business

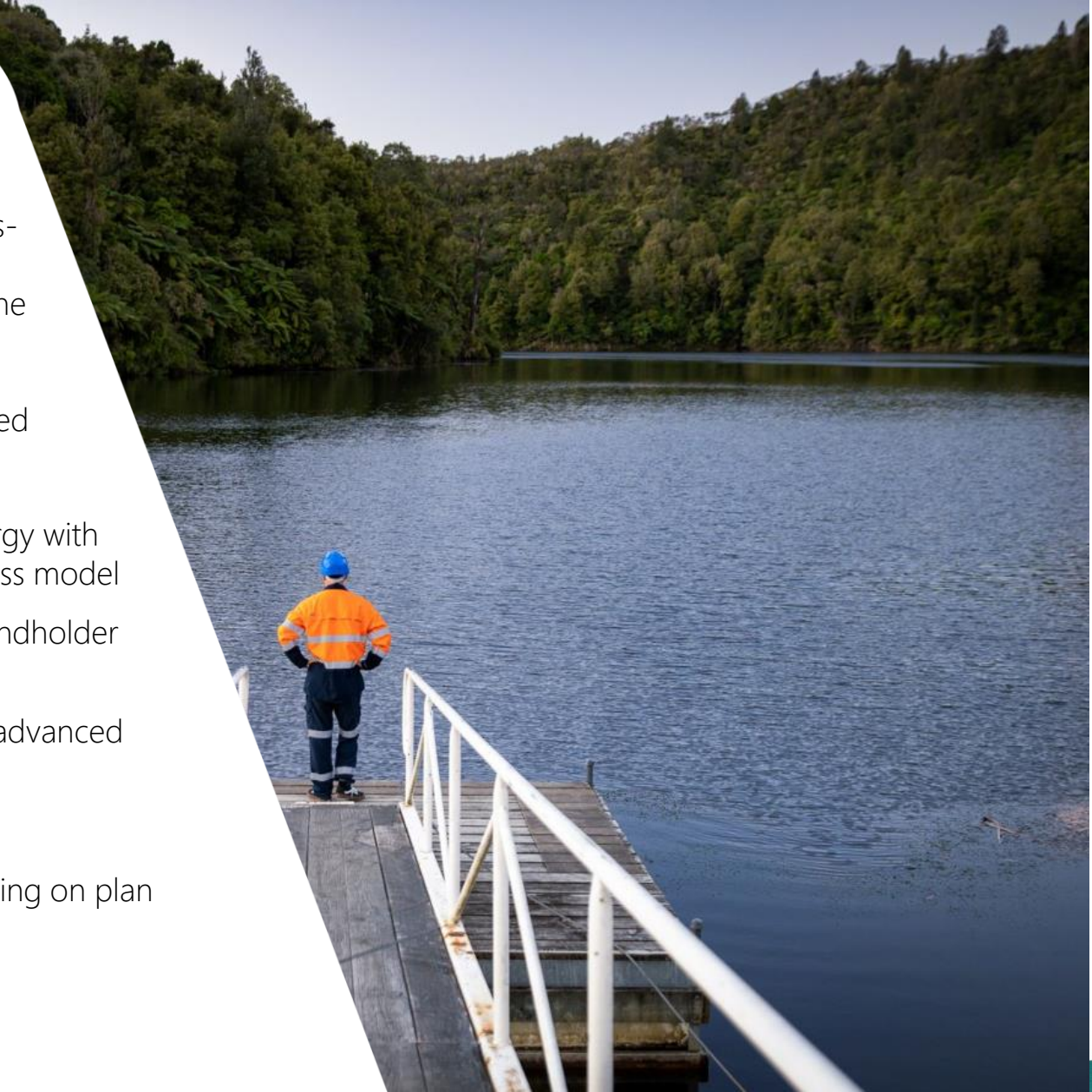


Shifting Focus

Following the successful separation and sale of the mass-market retail business in May 2022, Manawa Energy has made significant progress establishing and imbedding the new business model and strategy.

The key focus of the company has very much transitioned to strategy execution which is progressing successfully:

- Successfully separated and established Manawa Energy with refreshed strategy and focus, embedded new business model
- ~970MW of new development options with either landholder or option agreements in place
- ~375MW of other new development options under advanced negotiation
- Existing asset enhancement programme on track
- High value generation asset refurbishments progressing on plan

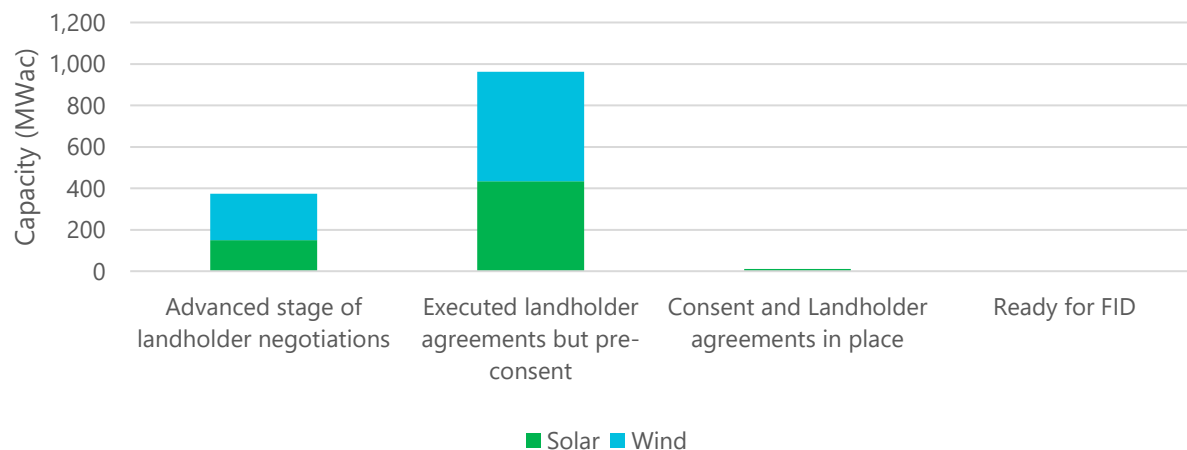


New Development Opportunities

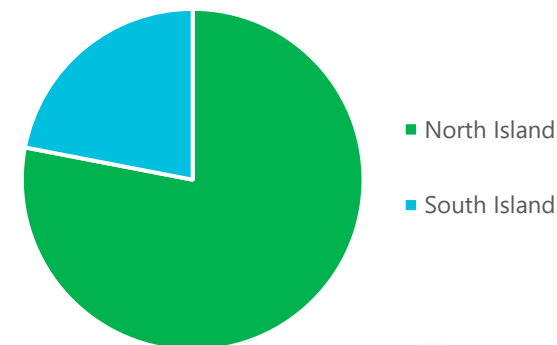
Pipeline Summary

- Manawa Energy's pipeline is progressing quickly, with ~970MW of solar and wind projects with either landholder or option agreements in place and ~375MW under advanced negotiation. NB: It is not expected that all of these options will translate into viable developments
- Long-term aspiration remains to develop 500MW of new projects by 2030
- Manawa Energy is now moving from 'origination' to a prioritisation and execution phase, with the objective of progressing projects through to being 'ready for FID'
- Given development timeframes, it is expected the solar opportunities are more near-term than wind developments

Key pipeline options by stage



Key pipeline options by Location



Generation Enhancement Update

All planned FY-23 enhancements are complete. A total of 30GWh pa of volume uplift has been delivered from enhancements so far. A further 77GWh pa is either planned and approved or being scoped for delivery in the coming years

FY-23 Enhancement update:

(Marlborough) Branch Infiltration Gallery (+10 GWh/pa)
Completed and operational

(Tasman) Cobb G5/G6 (+2 GWh/pa)
Cobb G5 and G6 generator replacement is complete, and new generators have passed commissioning tests. Generator performance exceeds design requirements

(Otago) Deepstream phase 2 (+3 GWh/pa)
Resource consent has been granted. Initial improvements have been made and additional water is being taken into the scheme



New Branch infiltration gallery with discharge into the Argyle Canal on the left

Recent Weather Events

- With the exception of one small hydro scheme in Hawke's Bay, Manawa assets fortunately avoided any significant impacts from Cyclone Gabrielle and other recent weather events
- All our people were safe, and we have been providing support 'on the ground' directly and via industry efforts
- The Esk scheme in Hawke's Bay (3.8MW) suffered significant damage
- The Esk scheme consists of two stations (Toronui 1.4 MW and Rimu 2.4 MW) with differing levels of damage
- The scheme is expected to remain out of service while further damage assessments can be undertaken. Preliminary assessments indicate repairs could take 3-12 months
- Damage is largely to conveyancing structures, transmission assets, and land. Most generation equipment remains in good condition
- Access to the site remains challenging



Major Asset Investment

Significant investment on high-value assets to secure future revenues and ensure safe, compliant, and efficient running:

FY-23 Major Asset Investment update:

(Otago) Waipori G3/4 generator replacement – Underway

End-of-life replacement of generating units at key strategic station. G4 replacement completed, G3 expected completion late 2024.

(Tasman) Cobb G5/6 generator replacement – Completed

As well as two new generator units, auxiliary equipment is also being replaced and modernised, including new bearings, lubrication, and cooling systems. Project also provides enhancement benefits (+2 GWh pa).

(Canterbury) Highbank unit upgrade – Underway

Replacement of both generator and turbine to secure future generation capacity and provide enhancement benefits. (+8 GWh pa).



*Original installation
of the Cobb G6
Generator in 1954,
and new G6
Generator in 2022*



Disclaimer

While all reasonable care has been taken in the preparation of this presentation, Manawa Energy Limited and its related entities, directors, officers and employees (collectively "Manawa") do not accept, and expressly disclaim, any liability whatsoever (including for negligence) for any loss howsoever arising from any use of this presentation or its contents. No representation or warranty, expressed or implied, is made as to the accuracy, completeness or thoroughness of the content of the information. All information included in this presentation is provided as at the date of this presentation. Except as required by law or NZX listing rules, Manawa Energy is not obliged to update this presentation after its release, even if things change materially.

The reader should consult with its own legal, tax, investment or accounting advisers as to the accuracy and application of the information contained herein and should conduct its own due diligence and other enquiries in relation to such information. The information in this presentation has not been independently verified by Manawa Energy.

Some of the information set out in the presentation relates to future matters, that are subject to a number of risks and uncertainties (many of which are beyond the control of Manawa Energy), which may cause the actual results, performance or achievements of Manawa Energy or the Manawa Energy Group to be materially different from the future results set out in the presentation. The inclusion of forward-looking information should not be regarded as a representation or warranty by Manawa Energy or any other person that those forward-looking statements will be achieved or that the assumptions underlying any forward-looking statements will in fact be correct.

This presentation may contain a number of non-GAAP financial measures. Because they are not defined by GAAP or IFRS, they should not be considered in isolation from, or construed as an alternative to, other financial measures determined in accordance with GAAP. Although Manawa Energy believes they provide useful information in measuring the financial performance of the Manawa Energy Group, readers are cautioned not to place undue reliance on any non-GAAP financial measures.

This presentation is for general information purposes only and does not constitute investment advice or an offer, inducement, invitation or recommendation in respect of Manawa Energy securities. The reader should note that, in providing this presentation, Manawa Energy has not considered the objectives, financial position or needs of the reader. The reader should obtain and rely on its own professional advice from its legal, tax, investment, accounting and other professional advisers in respect of the reader's objectives, financial position or needs.

